



OZONE[®]

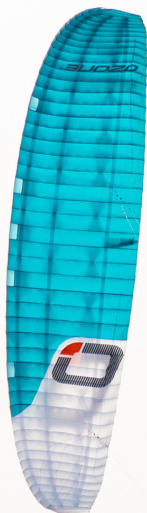
CHRONO V5 MANUAL

THANKS

Thank you for purchasing this Ozone kite. Our mission is to build kites with cutting edge performance, that are easy, fun and safe to use, no matter what your level.

At Ozone we are passionate about kiting, and it is this passion that drives our design team to perfect and develop new kites that we love to ride with.

We are proud of the quality of our products, and constantly searching for the best components and materials to use in our designs. All of our kites and accessories are manufactured in our own high-quality production facility in Vietnam, which guarantees a build quality that we are proud to put the Ozone name on. A close look at one of our kites reveals that same superior quality and construction that ensures that every Ozone kite will enjoy a long life, with consistent handling, performance and aesthetics.



FRA : POUR TÉLÉCHARGER CE MANUEL DANS VOTRE
LANGUE, ALLEZ SUR LE PAGE DU PRODUIT ET
CHOISISSEZ VOTRE KITE >> WWW.FLYOZONE.COM

ESP : PARA DESCARGAR ESTE MANUAL EN SU IDIOMA
DIRÍJASE A LA PÁGINA DEL PRODUCTO DEL MODELO
DE SU COMETA >> WWW.FLYOZONE.COM

ITA : PER SCARICARE QUESTO MANUALE NELLA VOSTRA LINGUA,
ANDATE ALLA PAGINA PRODOTTI DEL KITE IN VOSTRO
POSSESSO >> WWW.FLYOZONE.COM

DE : UM DIESE ANLEITUNG IN DEINER SPRACHE HERUNTER
ZU LADEN, GEHE AUF DIE PRODUKTSEITE DES KITES,
WELCHEN DU BESITZT >> WWW.FLYOZONE.COM



WARRANTY

Ozone warrants this product to be free from major defects in material or workmanship to the original purchaser, for a period of six months from the date of purchase.

This warranty is subject to the following limitations;

- The warranty is valid only when the product is used for its intended use, and does not cover products used in rental or teaching operations.
- Ozone will make the final warranty determination, which may require inspection and/or photos of the equipment, which clearly show the defect(s). If necessary, this information must be sent to the Ozone dealer, postage prepaid.
- If a product is deemed to be defective by Ozone, the warranty covers the repair or replacement of the defective product only.
- Ozone will not be responsible for any costs, losses, or damages incurred as a result of loss of use of this product. The warranty does not cover damage caused by misuse, abuse, neglect or normal wear and tear including but not limited to; rigging with other than Ozone components, damage due to excessive sun exposure, damage caused by improper handling or storage, damage caused by use in waves or shore break and damage caused by anything other than defects in material and workmanship.
- This warranty is voided if any unauthorized repair, change or modification has been made to any part of the equipment. The warranty for any repaired or replaced equipment is good from the date of the original purchase only. The original purchase receipt must accompany all warranty claims.
- The name of the retailer and date of purchase must be clear and legible.
- There are no warranties that extend beyond the warranty specified herein.

WARRANTY CLAIMS

- Warranty claims can only be handled once the product has been activated through our website. (go to www.flyozone.com to register your kite)
- Warranty claims must be processed and be issued a return authorization prior to shipping to the Ozone dealer the product was purchased from.

RELEASE OF LIABILITY

Ozone Kites LTD Release of Liability, Claim Wavier, Assumption of Risk.

By assembling and/or using this Ozone product, you agree that you have read and understood the entire Ozone product owners manual, including all instructions and warnings contained in that manual, prior to using the Ozone product in any way. You additionally agree that you will ensure any additional or subsequent user of your Ozone product will read and understand the entire Ozone product owners manual, including all instructions and warnings contained in that Manual, prior to allowing that person to use your Ozone product.

ASSUMPTION OF RISK

Use of the Ozone product and any of its components involve certain risks, dangers, and hazards which can result in serious personal injury and death to both the user and to non-user third parties. In using this Ozone product, you freely agree to assume and accept any and all known and unknown risks of injury to you and third parties while using this equipment. The risks inherent in this sport can be greatly reduced by abiding by the warning guidelines listed in this owner manual and by using common sense.

RELEASE AND WAIVER OF CLAIMS

In consideration of the sale of the Ozone product to you, you hereby agree to the fullest extent permitted by law, as follows;

TO WAIVE ANY AND ALL CLAIMS that you have or may in the future have against Ozone Kites LTD and all related parties resulting from use of the Ozone product and any of its components.

TO RELEASE Ozone Kites LTD and all related parties from any and all liability for any loss, damage, injury or expense that you or any users of your Ozone product may suffer, or that your next of kin may suffer, as a result of the use of the Ozone product, due to any cause whatsoever, including negligence or breach of contract on the part of Ozone Kites LTD and all related parties in the design or manufacture of the Ozone product and any of its components.

In the event of your death or incapacity, all provisions contained herein shall be effective and binding upon your heirs, next of kin, executors, administrators, assigns, and representatives. Ozone Kites LTD related parties have not made and expressly deny any oral or written representations other than what is set forth herein the Ozone Product Users Manual.



WARNINGS

READ THE FOLLOWING POINTS BEFORE ASSEMBLING YOUR KITE:

WARNING:

- Kite flying can be dangerous.
- Always use extreme caution when using this product.
- Misuse of this product can cause serious injury or death.
- Only use this product if you are in good physical health.
- Never act in a careless manner when using this product (such as jumping in the air, or tying yourself down).
- You are responsible for your own safety, and the safety of others around you when using this product.
- If you are under 18 you should have your parents or legal guardian read these warnings and instructions. You should not use this product unless you are under proper guidance and supervision.
- The use of this product exposes the user to many unavoidable and unexpected risks, dangers and hazards.
- Do not use this product if you are under the influence of alcohol, drugs or medications.
- This manual refers to the current product it comes with. No information contained herein applies to previous and/or other products. Always read and understand all warnings and instructions for any other product being used. To view previous product manuals go to www.flyozone.com

IMPORTANT SAFETY RULES:

- Before using this product you must take lessons from a certified instructor/school. Do not attempt to fly a kite without being taught by a certified kite instructor.
- This product is not a personal flotation device. Always wear a Coast Guard approved personal flotation device when using this product near the water.
- Always carefully inspect all of your equipment before using it.
- Always have a partner when launching and landing your kite.
- Always learn using a small two line trainer kite before using a larger more complicated kite.
- Never allow anyone who is not familiar with traction kiting to use this product without experienced assistance.
- Never use this product without a safety leash system. A loose kite is extremely dangerous to everyone downwind.
- The kite/control system is equipped with passive Release Systems, which need to be activated by the user for them to work.
- The leash system is not a permanent attachment to this product. Never permanently attach yourself to the kite or any of its components.

- Never use this the kite with another control system or safety leash. Only use the handles or bar that is supplied with this kite as other brands bars are not compatible with this design, therefore the Release System will NOT work.
- Always wear a helmet, knee/elbow pads, gloves, shoes and protective eyewear when using this product.
- Always use a high quality and well maintained kite specific harness.
- Get yourself used to the way your quick release devices work by testing them often in a non emergency situation.
- Rinse your quick release device in fresh water after every session. Quick release devices have a limited lifetime and must be checked and replaced often.
- Always release and re-load all the Release Systems to familiarize yourself with how they work. This is the only way to be sure that you know how to use them in all situations, and that they are correctly loaded and safe for use.
- If you have a bar with a mechanical quick release trim loop it must be changed after 250hours of kiting. Change any quick release or safety leash before if you see any sign of wear. The wearing of your quick release devices is not considered a warranty issue.
- Never act in a careless manner when using this product (such as jumping in the air, using this kite to fly or tying yourself down to a fixed object whilst attached to the kite).

CHOOSE SAFE WEATHER CONDITIONS:

- Never learn to use this product in more than 10 knots of wind.
- We highly recommend you purchase a wind speed indicator to be able to measure wind speeds. Study the wind guide to understand wind speeds.
- Never use this product in high winds.
- Never use this product in thunderstorm and lightning conditions.
- Only use this product when you can remain in a standing position.
- Never use this product in wind conditions that are above your ability level.
- Never use this product near or on the water in offshore wind conditions.

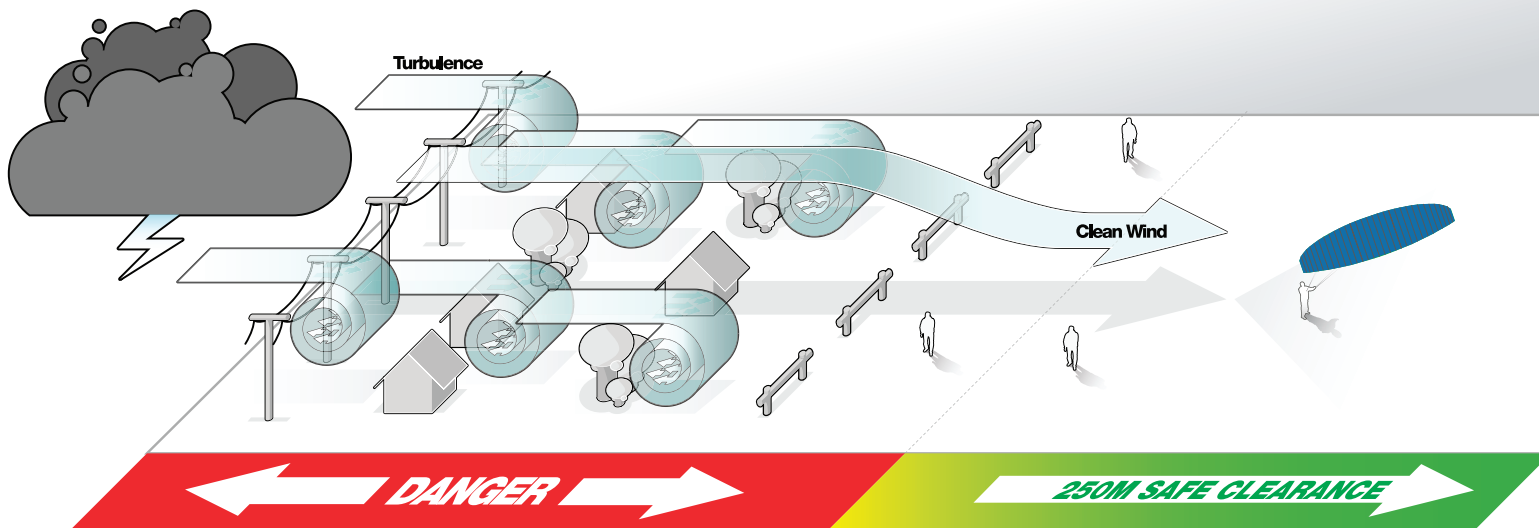


CHOOSE A SAFE LOCATION:

- Always observe local rules and regulations when using this product.
- Never use this product near power lines, telephone poles, trees, bushes, roads, automobiles or airports.
- Only use this product when you have at least 100m of clear space downwind, and on both sides of your launching position. The power of the kite can pull you downwind unexpectedly with great force.
- Do not fly your kite over other people or pets. Spectators should remain upwind of you when using this product.
- Never use this product on crowded beaches or fields.
- Never use this product near the water unless you know how to swim and are in good physical health.
- Practice launching and landing procedures, and self rescue techniques before using this product near the water.

USE CAUTION WITH FLYING LINES:

- Never touch the flying lines when the kite is in use. Flying lines are extremely dangerous while under tension and can cause serious injury or death.
- Never use this product with worn lines. A line that breaks while under tension can cause serious injury or death.
- Always check your flying lines for knots before each use. Knots greatly reduce the strength of the lines.
- Stay away from tangled flying lines unless the kite is secured to the ground. An unsecured kite can self launch unexpectedly, and can cause serious injury or death.
- Never allow yourself, or anyone else, to get between the handles/control bar and the kite when using this product.

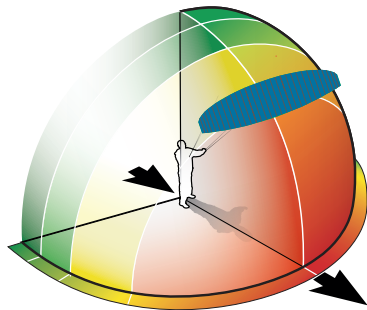


WIND

FORCE	KNOTS	MPH	METRES/SEC	KPH	DESCRIPTION
0	<1	<1	<0.02	<1	Calm: Smoke rises vertically. Go Paragliding!
1	1-3	1-3	0.3-1.5	1-5	Light air: Smoke drift shows wind direction. It's coming - get large size kites ready.
2	4-6	4-7	1.6-3.3	6-11	Light breeze: Wind felt on face, leaves rustle. Kite: cruising with buggy/mountain board/ski/snowboard. Experts hydro foiling.
3	7-10	8-12	3.4-5.4	12-19	Gentle wind: Leaves in motion, light flags extended. Kite: ripping on light wind gear/hydrofoil/mountain board/buggy/snow. Wing: Learning with SUP/windsurf board, skate/mountain board, ski/snow board. Experts riding with hydrofoil.
4	11-16	13-18	5.5-7.9	20-29	Moderate wind: Flags flap, small branches move. Now we're talking. Kite: twin tip jumping begins. Wing: Ripping on hydrofoil, skate/mountain board, ski/snow board. Cruising with SUP/windsurf board.
5	17-21	19-24	8.0-10.7	30-38	Fresh wind: Small trees begin to sway. Everyone loving life, powered up and smiling!
6	22-27	25-31	10.8-13.8	39-50	Strong wind: Large branches in motion. Competent riders with huge grins.
7	28-33	32-38	13.9-17.1	51-61	Near gale: Whole trees in motion. Competent riders ripping and jumping.
8	34-40	39-46	17.2-20.7	62-74	Gale: Trouble walking! Expert riders boosting into orbit!

WIND WINDOW

CENTRE OF WIND WINDOW = MAXIMUM POWER



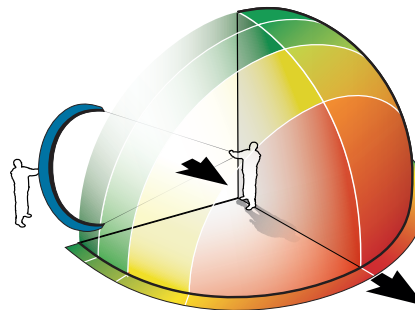
Wind Direction

Minimum Power



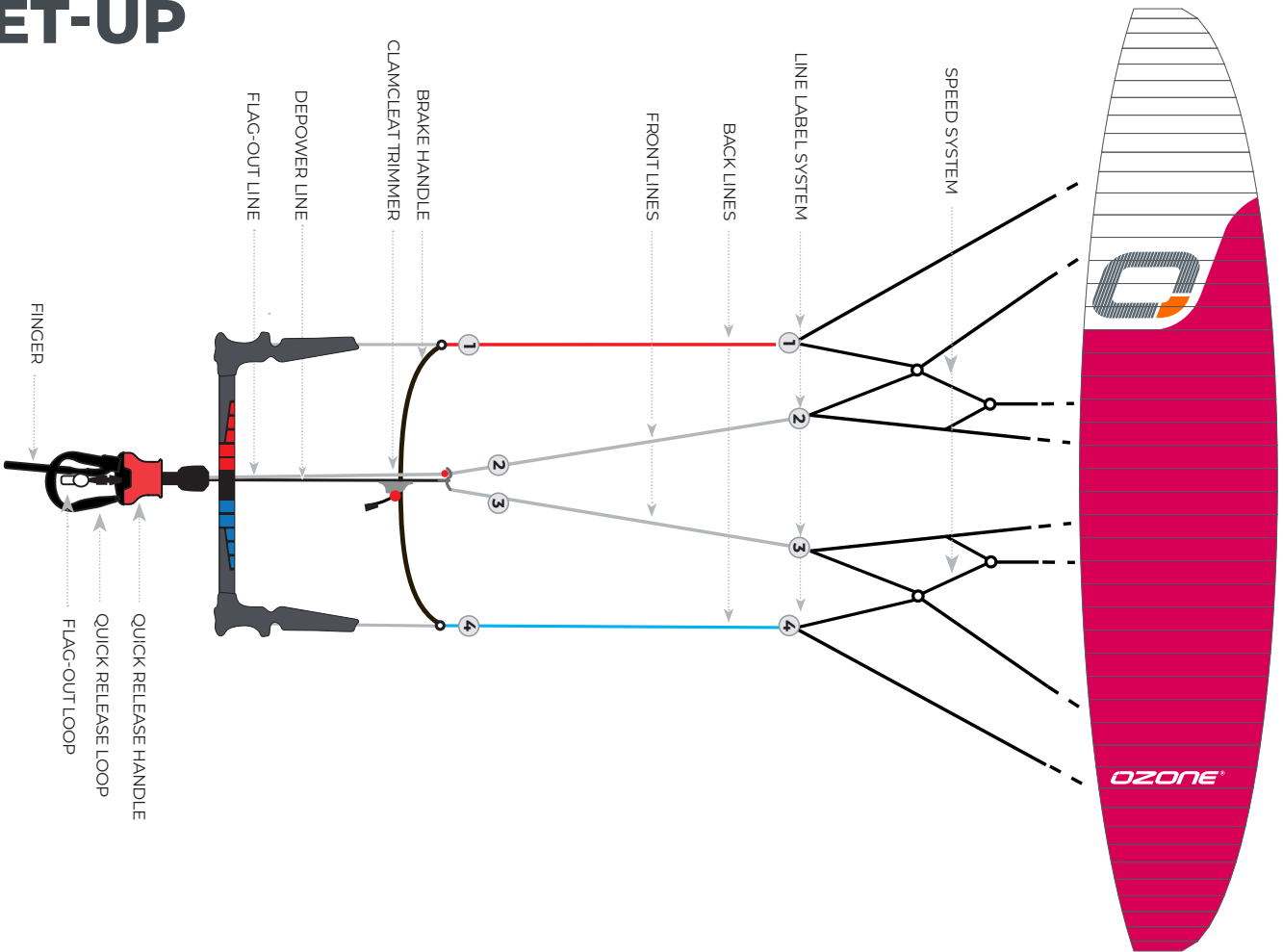
Maximum Power

EDGE OF WIND WINDOW = MINIMUM POWER



Wind Direction

SET-UP



SET-UP

SET UP YOUR KITE FOR THE FIRST TIME IN WIND LESS THAN 12KPH TO ENSURE YOUR SAFETY AND THE SAFETY OF OTHERS.

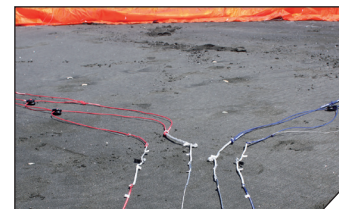
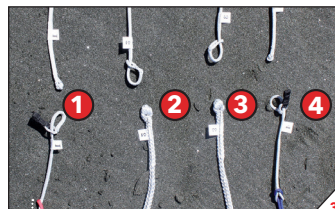
- Unfold the kite on the ground, in the direction of the wind.
- Fold over the upwind wing tip and use the sandbag provided or put some snow, sand, or your board on the tip to secure the kite.
- Take the speed system from the Velcro retainer and lay out on the ground. Untangle if necessary.
- Take the bar and unwind the lines at 90 degrees to the kite. (Bars are delivered with the flying lines already connected.)
- Connect the lines to the kite following the numbered label system ensuring all lines are free from each other.

Now you're ready to fly!

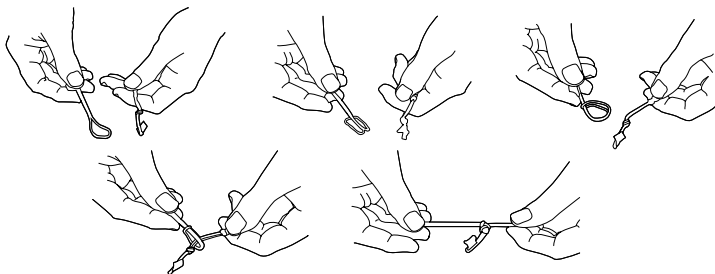
KITE SET UP



BAR SET-UP



All line to kite connections are made using a "LARKS HEAD" knot.



ALWAYS DOUBLE CHECK YOUR LINES BEFORE LAUNCHING. WRONGLY ATTACHED LINES WILL STOP THE KITE FLYING CORRECTLY AND COULD THEREFORE MEAN YOU HAVE NO CONTROL OF THE KITE PUTTING YOURSELF IN A DANGEROUS SITUATION.

SECURITY

ALL OZONE RELEASE SYSTEMS REQUIRE THE USER TO OPERATE THEM MANUALLY IN THE CASE OF AN EMERGENCY. IT IS IMPERATIVE THE KITE IS SET-UP AS SHOWN IN THE MANUAL, INCORRECT SETUP WILL COMPROMISE THE OPERATION OF THE RELEASE SYSTEM. ALL LINES AND DE-POWER SYSTEMS MUST BE TANGLE FREE AND THE KITE LEASH CONNECTED IN THE RIGHT WAY, SEE PICTURES.

QUICK RELEASE CONNECTION

The Quick Release is the primary connection to the kite. Make sure you connect to the Quick Release using the finger as shown in the pictures.

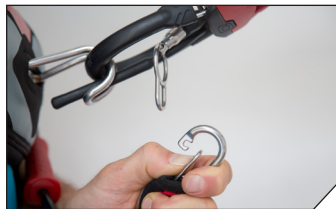


BELOW THE BAR RELEASE (RECOMMENDED MODE)

All riders should attach their Kite Leash to the Flag Out System. This is the small eyelet on the Stainless Steel Swivel Ring.

When the release is activated, the kite will flag out and fall to the water/ground.

In all situations make sure that all lines are clear of all working release systems and the kite leash is connected in the right way.



ADVANCED RIDERS (USE AT YOUR OWN RISK, NOT RECOMMENDED)

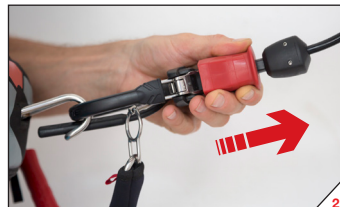
Riders performing unhooked tricks or who are more confident and have spent many hours Kiting can attach in Expert mode, where the loop part runs through the large eye of the steel ring. When letting go of the bar in Expert mode (without activating the release e.g. missed handle pass) the kite will depower but WILL NOT flag out. Be aware in this situation, the Quick Release will be out of reach and can therefore not be released. When hooked in and activating the Quick Release the steel ring automatically slips off and the kite will flag out.



SECURITY

1ST STAGE OF RELEASE

Activate the Quick Release as shown in the pictures. Providing your leash is attached to the flag out system the kite will 100% depower.



RELOADING THE QUICK RELEASE



FINAL STAGE OF RELEASE (IN AN EXTREME EMERGENCY)

In the case of an extreme emergency where you need to completely release from the kite, use the quick release on the kite leash. This will completely detach the kite and control system from the user, and could therefore hit anything or anyone downwind causing damage, serious injury or death. RIDE RESPONSIBLY.



SECURITY

RELOADING THE LEASH



1ST FLY

NEVER FLY YOUR KITE IN STRONG WIND FOR THE 1ST TIME. DO NOT ATTEMPT TO FLY A KITE WITHOUT BEING TAUGHT BY A CERTIFIED KITE INSTRUCTOR.

LIGHT WINDS

If the wind is light (less than 8 kph) lay trailing edge directly into the wind with sand/snow to secure the kite. Place yourself directly in front of the kite. Hook into the Quick Release. Step backwards while pushing the bar forward. The kite will slowly inflate and take off. Keep some tension on the back lines until the kite is fully inflated. In very light winds, to assist launching, gently grab and pull on the front lines until the kite takes off from ground.



STRONG WINDS

If the wind is strong (more than 8 kph), lay kite directly downwind with sand/snow or board securing the upwind tip. Place yourself at 45 deg to the kite upwind. Hook into the Quick Release. Step backwards while pulling the down wind side of the bar to ease kite into the air. The kite will slowly inflate and take off on the side of the wind window. Keep some tension on the back lines until the kite is fully inflated.



1ST FLY

STRONG WINDS CONTINUED



LANDING

OPTION 1:

Only recommended when you don't have an assistant.

Release the Primary Security.

Ensure the safety leash is connected to the flag out line (see pictures, this is the recommended safety option). Activate the Quick Release, and the kite will flag out on one front line and fall to the ground. (See SECURITY)

OPTION 2:

Only recommended in light winds.

Grab the Brake Handle with one hand then pull it behind your back and HOLD. The kite will stall evenly and reverse to the ground.

Take care not to release the Brake Handle until the kite has been secured with sand or snow.



LANDING

OPTION 3:



REVERSE RELAUNCH

When the kite is landed face down, take the Brake Handle firmly, pull and hold. The kite will reverse from the ground, turn over, and land leading edge up. The kite is now ready to launch normally. See "LAUNCHING".





CLAMCLEAT TRIMMER

To release the line from the cleat teeth, first pull out and down to unlock the line from the teeth, then set the trimmer line to the desired amount. Pull the trimmer line down to de-power the kite. This is needed if you are overpowered, for unhooked riding, or if you are walking on the beach or snow.

Release the trimmer line away from you to increase kite power.



100% DE-POWER



FULL POWER



50% DE-POWER

TRIMMING FOR LINE STRETCH

All lines should be maintained as close to equal length as possible. Flying lines can stretch over time, generally the front lines stretch more as these take the majority of the load.

To check your lines, unwind the lines from the bar and have a partner hold the lines even at the bar end. Taking hold of the lines at the other end, pull on the lines to check they are even. If the lines are not even you may either;

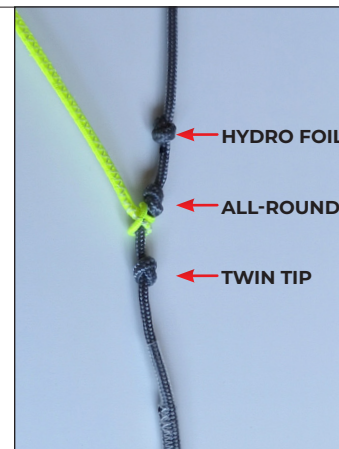
- 1: Stretch out the shorter lines. Attach the shorter lines to a car hitch or something very solid. Then take hold of the bar and pull with enough force to stretch the line. Do this to any lines that are shorter and re-check that all 4 lines are equal length.
- 2: Use the Leader Line trimming knots located underneath the bar ends.



BRAKE LINE SETTINGS

Three settings allow you to fine tune kite feedback and bar pressure to your liking. It is quick and easy to change with no extra lines to add or remove.

Open the larks head knot on the KRI line (yellow line attached on the Speed System) to move position to one of the three settings:



All-round – The ideal balance in performance and feeling for most riders and conditions. The All-round setting is the middle knot on the PBI line (factory setting).

Twin Tip – Increases bar pressure and offers a sharper, more direct feeling perfect for Twin Tip riding. If you prefer a heavier and direct feel this could be the setting for you. The Twin Tip setting is the lower knot on the PBI line.

Hydro foil – Decreases bar pressure with a longer lifting period perfect for foiling maneuvers. The Hydro Foil setting is the upper knot on the PBI line.

MAINTENANCE

This is a high-end performance product. When often used highly powered up or with race and hydrofoil boards you are using the kite at it's top end and it will wear quicker.

PRE AND POST USE CHECK LIST.

You must inspect all your equipment before and after every use. Check the entire kite including upper and lower surfaces, line attachment points, speed system and bridles. Immediately replace any worn or damaged parts with original parts only.

- **CONTROL SYSTEM AND QUICK RELEASE:** Check for abrasion/wear, if any part is damaged replace it immediately. Always clean your control system with fresh water after every session, and reload/activate the Quick Release to check the system is functioning correctly. Store your control system with the Quick Release open. Reload the next time you set up your kite.
- **LINES:** Check them every time you wind and unwind the lines. If one of them is damaged, change the corresponding pair.
- **SPEED SYSTEM:** Check the pulleys and lines for abrasion, if any are damaged change them immediately.
- **BRIDLE LINES:** Check the bridle lines for abrasion, if any are damaged change them immediately.
- **SAIL:** Check there are no holes or tears in the sail. If your sail is torn, you can repair it with the sticky cloth, provided in repair kit. To repair the sail, make sure it is clean and dry. Prepare two pieces of sticky cloth, one for each side of the damaged area. The patch should cover the hole by at least 2cm all round. Lay flat and stick on both sides.
- **PACKING:** Dry your kite after use away from the sun and direct heat. Never leave a wet kite in its bag. Store your kite in a dry place out of the sun. Never wash or clean it with detergent.



PACKING

CONCERTINA METHOD:

We highly recommend using the concertina method when packing. It will keep Leading Edge plastic battens in their designed shape while the kite is stored.

The leading edge plastic battens are a fundamental part of the design and should not be forced out of their given shape otherwise the kite can lose stability and flying characteristics.

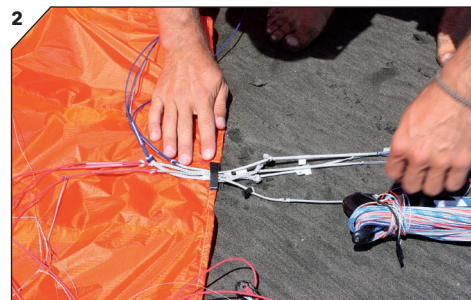
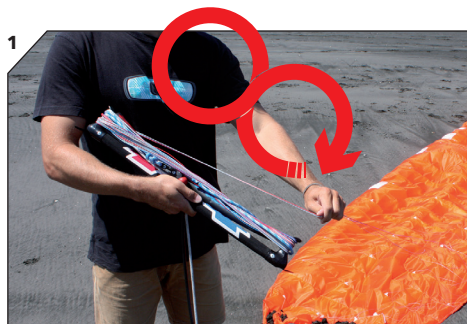
The optional Closed Cell Compressor bag makes packing with the concertina method easy and hassle free.

- Land and safely secure the upwind tip with the supplied sand bag, sand, snow or your board.
- Wind the lines around the bar horns. Secure the lines with the elastic.
- Also wind up the Speed System onto the bar – this helps reduce bridle tangles.
- Open the centre cell zip on the top surface.
- Concertina the Leading Edge (gathering the plastic profile battens together) starting at the centre of the kite, working towards the down wind side.
- Turn the kite away from the wind and repeat for the other side.
- Store the concertinaed Leading Edge in the velcro holder.
- While deflating use the internal compression straps to keep the kite in place.
- Once the kite is fully deflated close the zip on the kite ready for the next session.
- Close the bag zip and draw cord, then fold in half or three sections.
- Use the outside compression strap to keep the kite folded.



For a quick and temporary pack down the tip on tip method can be used.

- Land and safely secure the upwind tip with the supplied sand bag, sand, snow or your board.
- Wind the lines around the bar horns. Secure the lines with the elastic.
- Also wind up the Speed System onto the bar – this helps reduce bridle tangles.
- Open the centre cell zip on the top surface.
- Fold the kite tip on tip and roll from the tip to the center.
- Fold the kite to the length of the bar and fasten the webbing strap around the folded kite and bar, then put it into the kite bag.



I N S P I R E D B Y N A T U R E



D R I V E N B Y T H E E L E M E N T S