



ENDURO V4

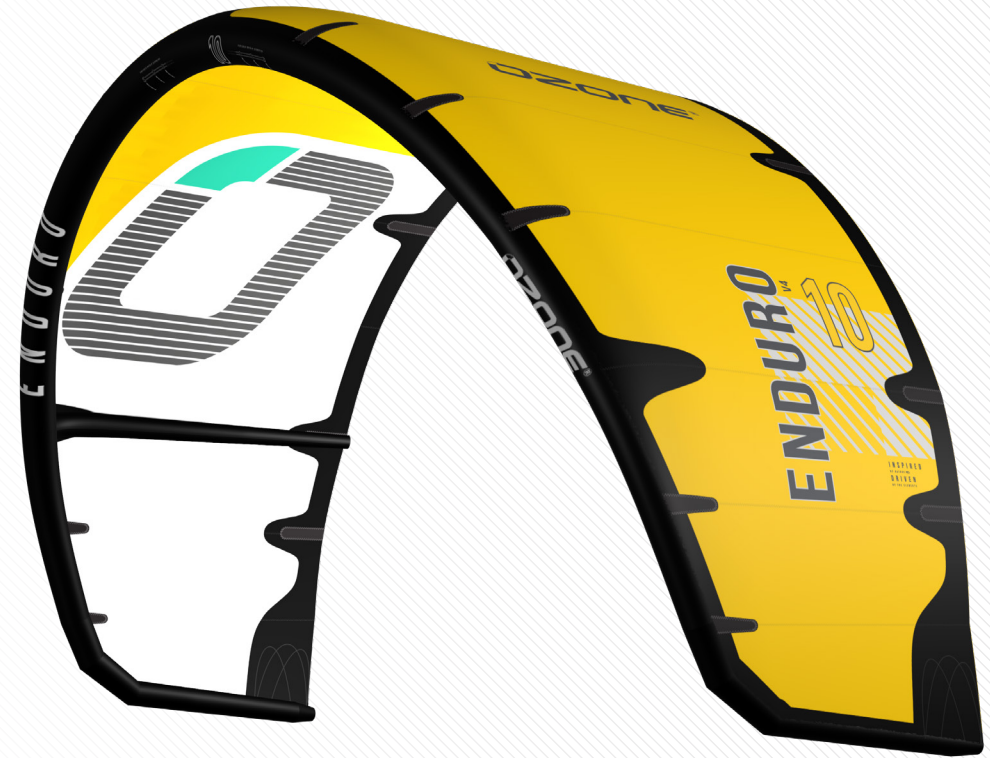
YOU DEFINE THE LIMIT

OZONE[®]

ENDURO^{V4}

The Enduro V4 has undergone a complete re-design using our latest construction technology and design software features. Keeping true to its purpose as an incredibly versatile performance kite the fourth version of this all time favourite takes performance and feeling to the next level.

Having been long recognized as one of the best all-round kites on the market for any style and any conditions, it was an exciting challenge for our design team to take on a re-design of the Enduro.





CONTINUOUS CURVE L.E.

Utilising our new Continuous Curve Leading Edge construction, each segment is now curved to form a perfect smooth arc from tip to tip as opposed to straight segments with angled joints.



TRANSVERSE SAIL SHAPING

Transverse Sail Shaping has been incorporated to perfectly match the new Continuous Curve Leading Edge – the additional panels attaching to the leading edge optimise canopy tension in this critical area of the profile section.

These latest design features reduce parasitic drag and create a cleaner surface at the most important area of the airfoil. The result is less turbulent airflow, which positively affects the lift to drag ratio. New thinner bridle line diameters reduce drag even further to





DO IT ALL – ANY STYLE, ANY CONDITIONS

The Enduro V4 is incredibly smooth in the air with a large de-power range, an amazing bar feeling with progressive handling, boost for jumping and drift in the waves.

- The ultimate do-it-all inflatable kite - any style, any conditions
- Freeride, Wave/Foil, and Freestyle settings
- Versatile Curved Open-C shape
- Performance kite for intermediate to advanced riders



IN THE WAVES IN THE WAVES IN THE WAVES

In the Waves, the handling, de-power and drift opens up a world of opportunity.

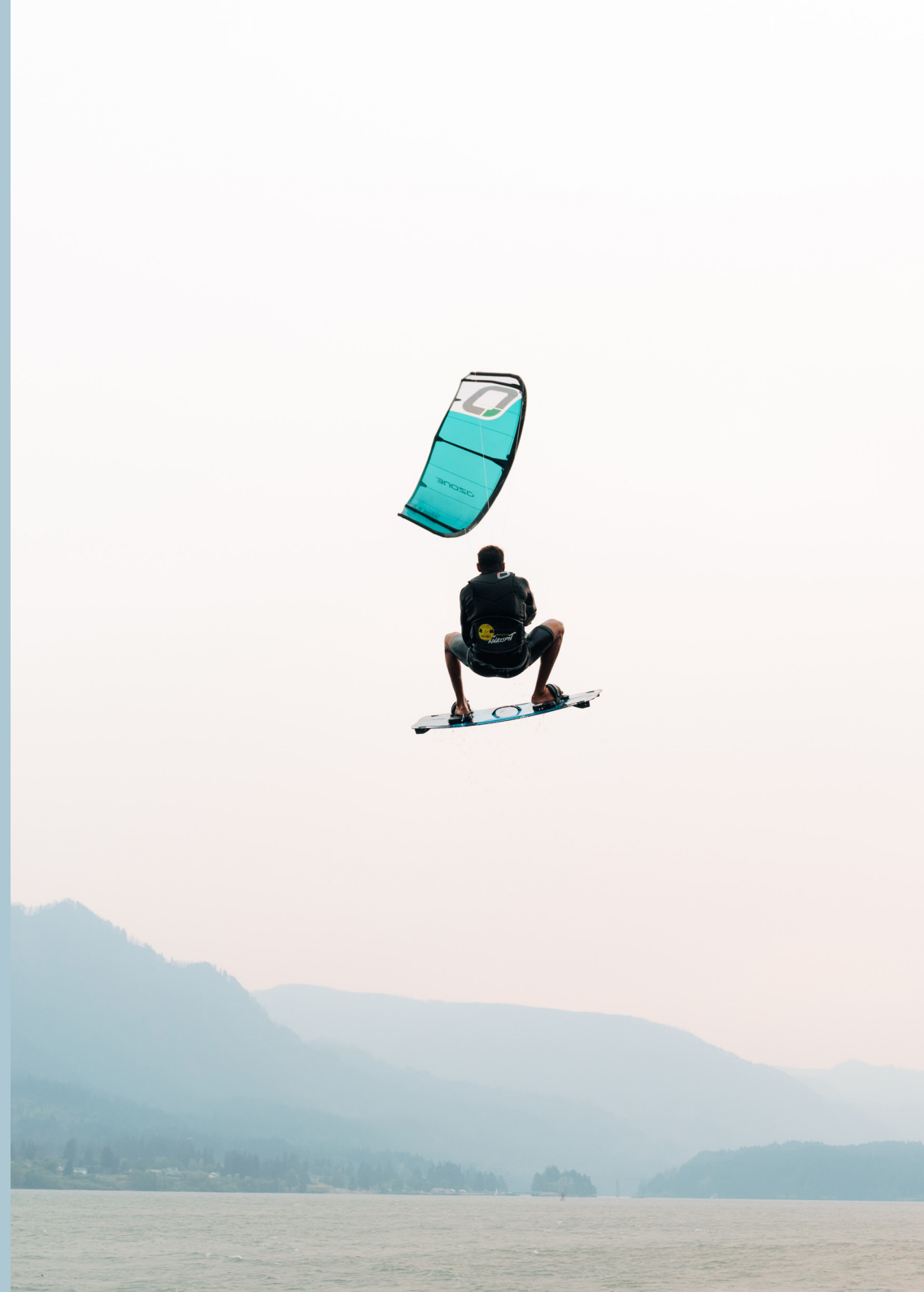
For strapless freestyle the progressive handling with smooth lift make spinning and air tricks easy to learn and land. The Enduro is not as dedicated to waves as the Reo, but it still delivers solid wave riding performance.



FREESTYLE

The Enduro makes freestyle progress fun and easy from your first hooked in moves, boosting airs, rotations and kite loops.

For unhooked freestyle the Enduro delivers accessible performance making learning your first handle passes right up to technical moves a breeze.





ENDEURO FREERIDE MULTIUSE

For Freeriders the Enduro excels no matter what board you choose to ride. Whether on a twin tip, surfboard or foil board the smooth power delivery, refined predictable handling and excellent de-power allows you to relax and enjoy the ride.





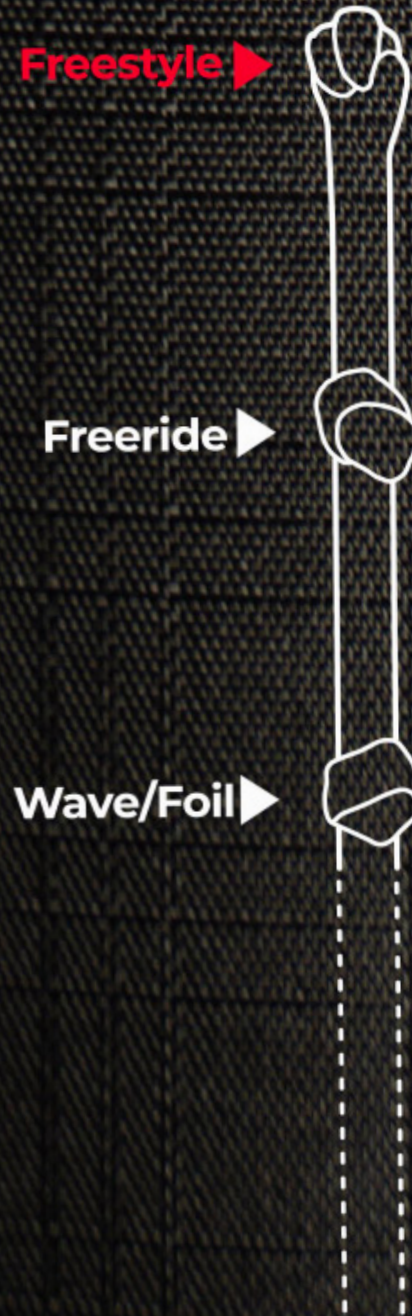
VBG FOR FREE RIDING, FREE STYLING OR WAVE RIDING

Quick and easy to change with no extra lines to add or remove.

Our market leading three stage Variable Bridle Geometry offers outstanding performance across a wide range of disciplines for intermediate to advanced riders whether you're free riding, free styling or wave riding.

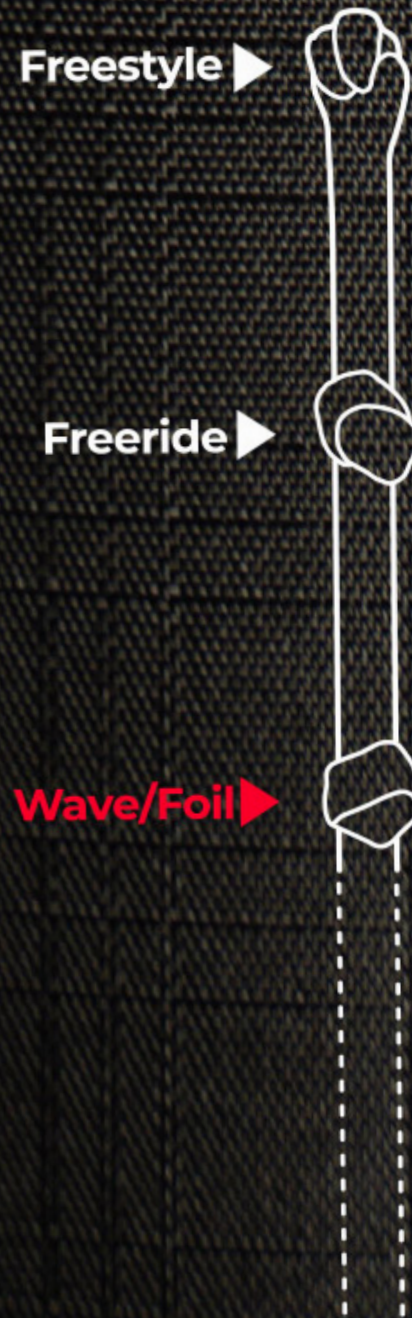
FREESTYLE

Increases sheeting bar pressure, increases power in kite loops and increases pop for unhooked tricks. If you prefer a heavier and direct feel this could be the setting for you. The Freestyle setting is the lower knot on the VBG Pigtails.



WAVE / FOIL
WAVE / FOIL
WAVE / FOIL

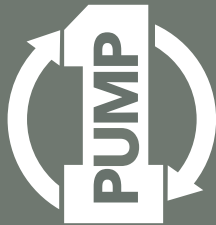
Decreases bar pressure and increases steering reactivity in all states of power and de-power. It is easier to turn the kite while de-powered when riding a wave or hydro foiling. The Wave/Foil setting is the upper knot on the VBG Pigtails.



FAST FLOW ONE-PUMP

An all new Fast Flow One-Pump Inflation System makes set up and packing quick and easy.

It features single point inflation/deflation and a high air flow rate between the Struts and Leading Edge, with clips to seal the hoses to prevent unwanted air flow in case of damage.





BACK LINE ADJUSTMENT

The Enduro features multiple back line adjustments to customize steering pressure and turn speed.

Combined with our Variable Bridle Geometry, this offers the ultimate in customization of feeling and performance of your kite.

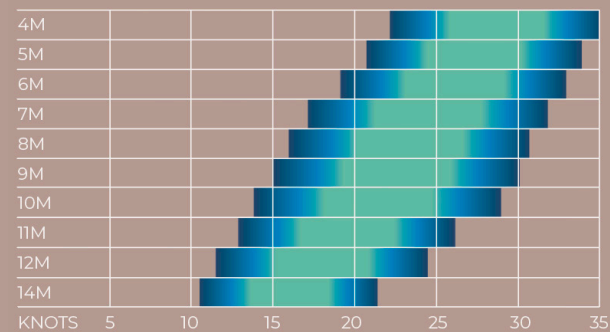
WATER KITE TECHNICAL BAG

- Technical Bag with loads of space
 - Internal stash pocket
- External control system pocket
 - Board straps
 - Pump holder
- Adjustable shoulder straps
- Back panel foam padding provides extra comfort





ENDURO V4

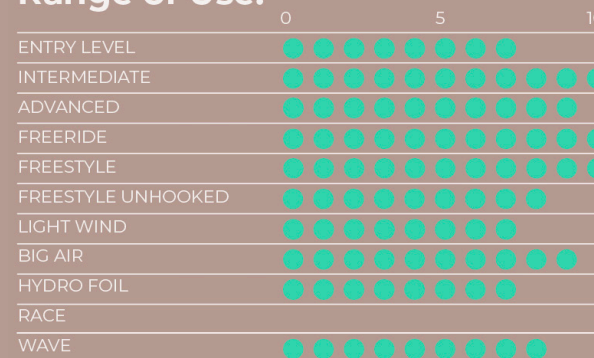


■ SWEET SPOT
 ■ INTERMEDIATE TO ADVANCED
 ■ ADVANCED

Wind range is indicative only based on an average rider weight of 80kg. Actual range will vary based on rider skill level and type of board used.

Bar size recommended 45CM (4M to 7M), 50CM (8M to 12M), 55CM (14M).

Range of Use:



INSPIRED

BY NATURE 

DRIVEN

BY THE ELEMENTS

